



Cricketers Lane, Windlesham

£825,000



Cricketers Lane, Windlesham, Surrey

Charming detached four bedroom Victorian cottage with large parking area to front, situated in a semi rural private lane location just a short walk from Windlesham Field of Remembrance playing fields.

FEATURES

- Private lane close to park and woodland
- Walking distance to village shops and pubs
- Stylish interior
- Period features including open fire
- Engineered oak flooring
- New Worcester boiler/power flush in 2024
- Recently decorated
- New carpets

ACCOMMODATION

- Downstairs cloakroom/utility room
- 'In frame' shaker style kitchen
- Dining room
- Lounge
- Conservatory
- Office/ground floor bedroom
- Three upstairs bedrooms
- Upstairs family bathroom

OUTSIDE

- Large driveway parking area to the front
- Main area of garden to the front of the house
- Gravel patio/dining area

EPC RATING

E

LOCAL AUTHORITY/COUNCIL TAX

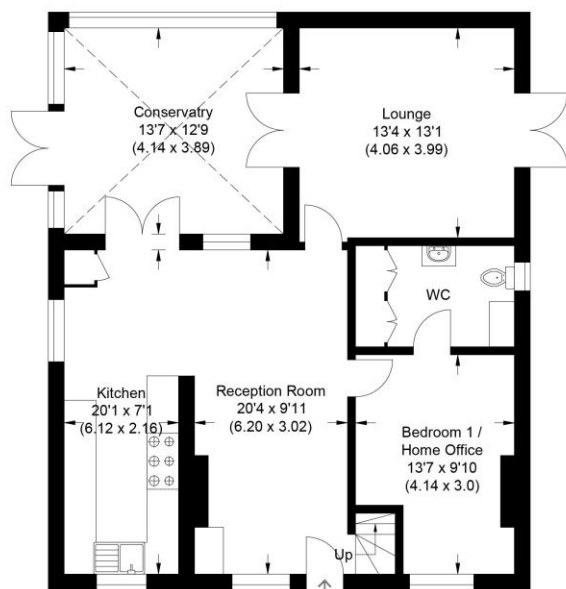
Surrey Heath – Band E



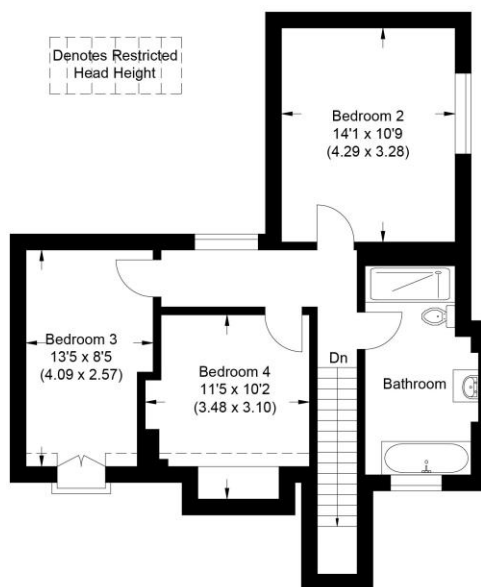




Approximate Gross Internal Area
138.24 sq m / 1488.0 sq ft



Ground Floor



First Floor

Illustration for identification purposes only, measurements are approximate, not to scale.

Disclaimer: We wish to inform prospective purchasers that we have prepared these sales particulars as a general guide. We have not carried out a detailed survey, nor tested the services, appliances and specific fittings. Room sizes are approximate and rounded: they are taken between internal wall surfaces and therefore include cupboards / shelves, etc. Accordingly, they should not be relied upon for carpeting, curtains / blinds and kitchen equipment, whether fitted or not, are deemed removable by the vendor unless specifically itemized within these.



NEWTON ROWE
SALES & LETTINGS

The Old Dairy, 7 Updown Hill, Windlesham, Surrey GU20 6AF
enquiries@newtonrowe.co.uk | 01276 986900